

GULF OF MEXICO

SITE PLAN

SCALE: 1" = 40'



SUBMITTANT CORNER SECTION N-20-18

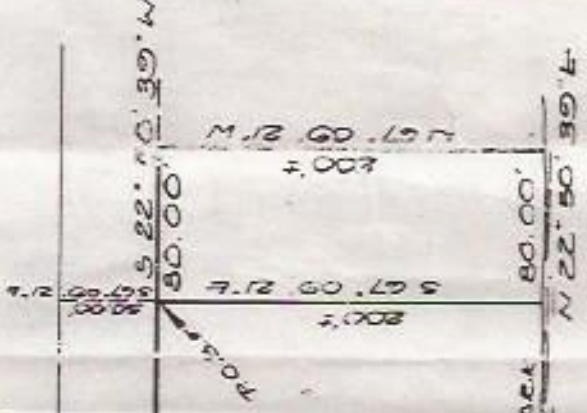
GULF BOULEVARD
N 22° 50' 30" E 1351.00'

N 22° 50' 30" E 650.00'

650.00' HIGH WATER MARK

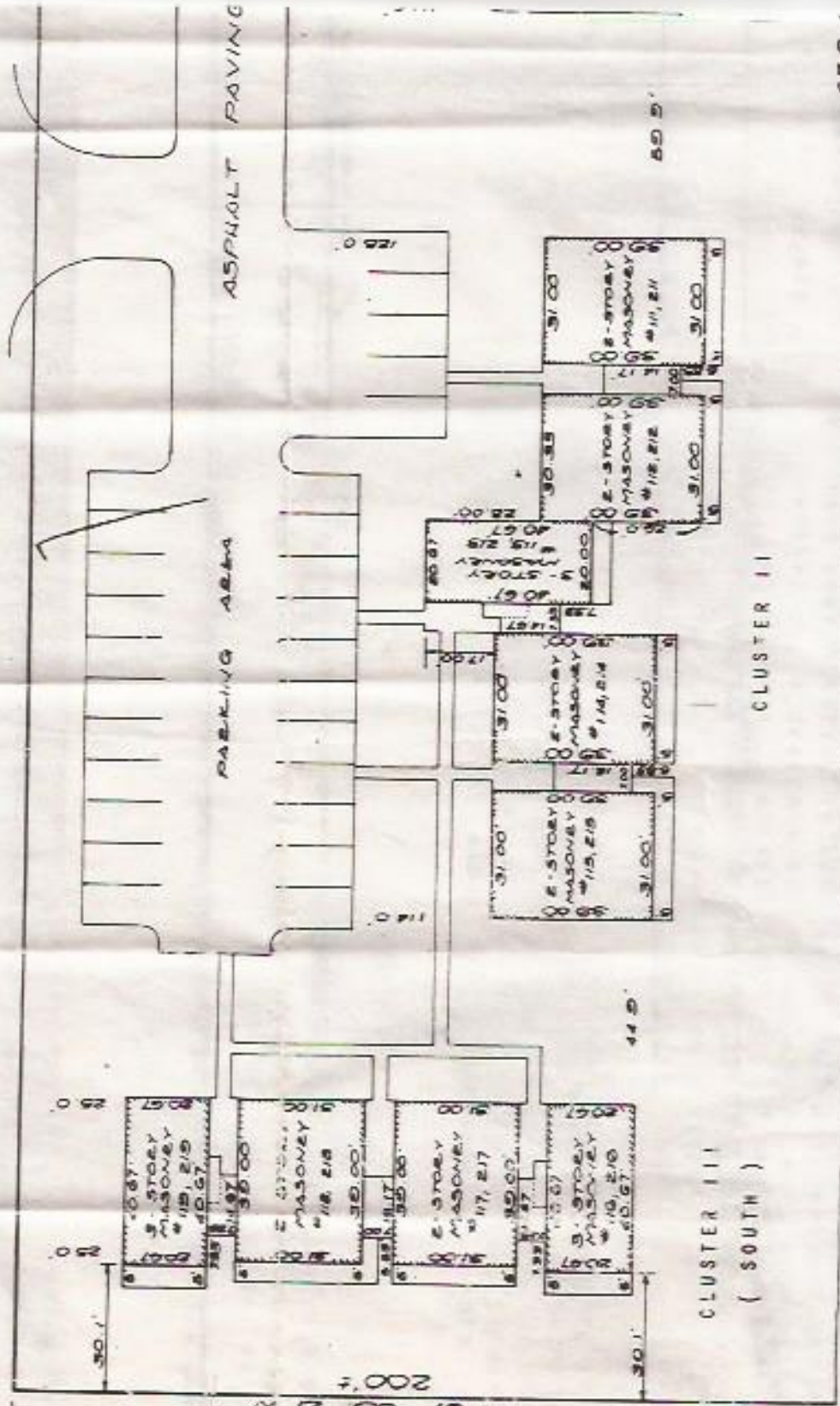
GULF OF MEXICO
N 22° 50' 30" E 650.00'

OVERALL SITE PLAN SCALE: 1" = 100'



NO.	DATE	REVISION	BY
1			
2			
3			
4			
5			
6			
7			
8			
9			
10			
11			
12			
13			
14			
15			
16			
17			
18			
19			
20			

GULF BOULEVARD



522' 50"

50.0'

200.0'

CLUSTER III
(SOUTH)

CLUSTER II

PARKING AREA

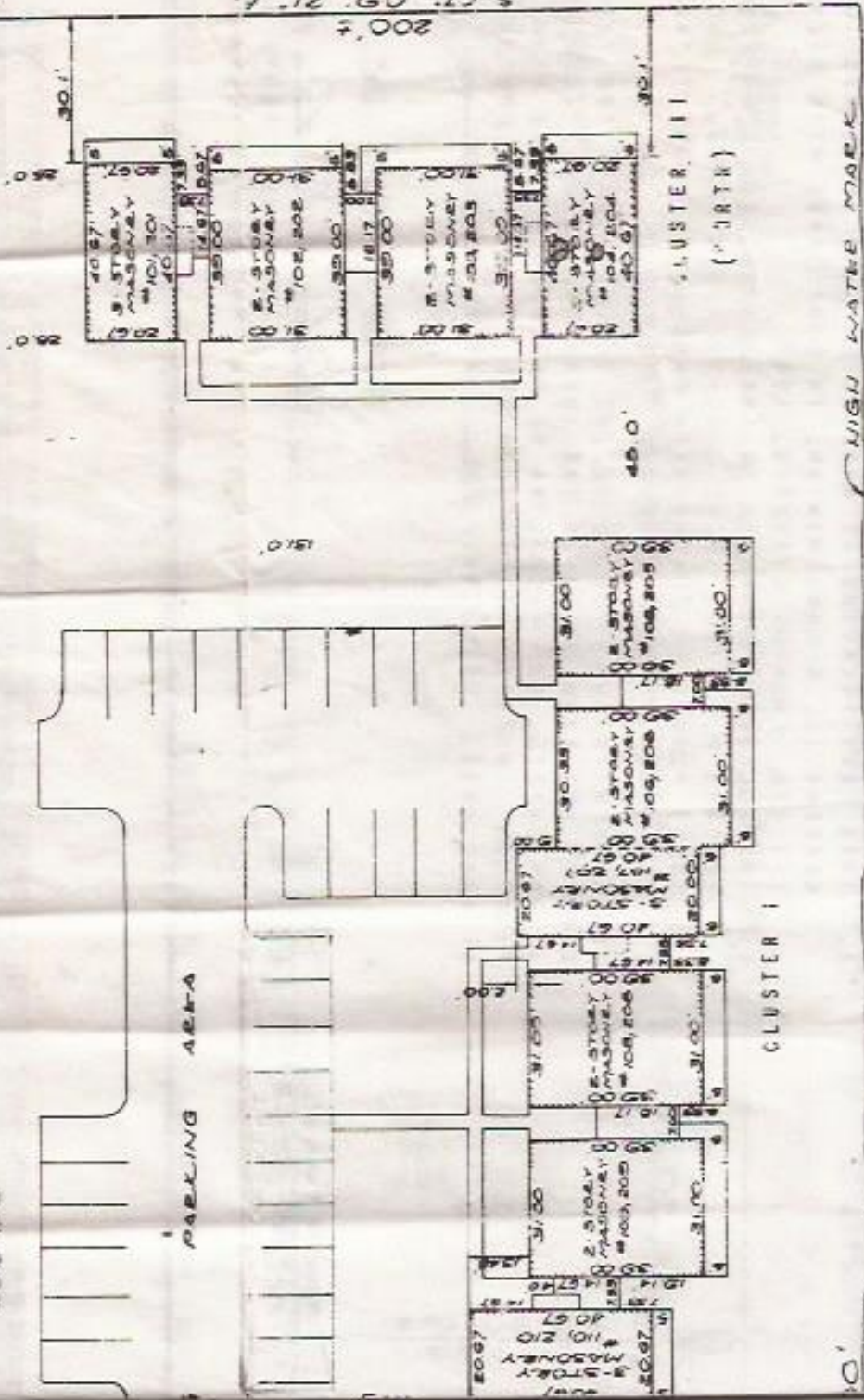
ASPHALT PAVING

AR.D

12 - 3 SIDED BALCONIES 30' WIDE } TOTAL 19 UNITS
 5 - 3 " 20' " "
 2 - 2 " 20' " "

N 22° 50' 30" E
 650.00'

PARKING AREA



567.09' 21.7
 200' 7
 301'
 301'

CERTIFICATE OF SURVEYOR

30' 30" W